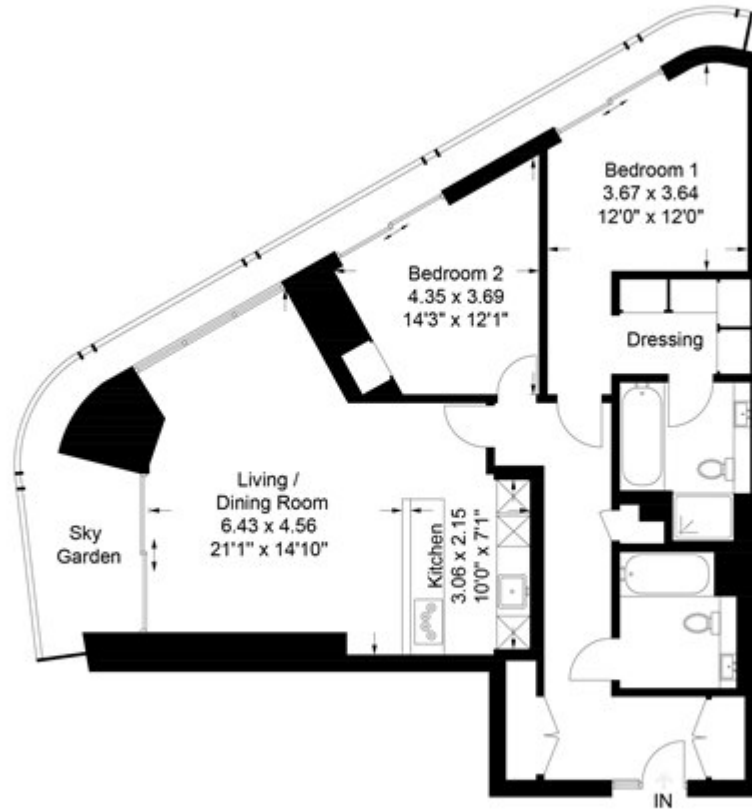


# Blackfriars Road, London

## £1,550 PW

One Blackfriars, SE1  
Approximate Gross Internal Area = 96 sq m / 1033 sq ft



Chase Evans makes every attempt to ensure accuracy, however all measurements are approximate. All aspects of this floor plan are for illustrative purposes only and not to scale. Errors and omissions excepted (E&OE).